



The Boy Scouts of America and the United Methodist Church



Charter Organization Relationship Going Forward



What just happened?

The General Conference of the United Methodist Church chose to discontinue chartering Scouting Packs, Troops and Crews.

Negotiations about what would happen to those units between the National Council of the BSA and the General Conference were very fluid through the summer and into the fall, when a workable plan was presented by the United Methodist Men.

At the beginning of this, the Buckskin Council Executive Board formed an Ad Hoc Committee to observe and study this process as it unfolded. Ultimately, the Ad Hoc Committee advised the board on the necessary policies to protect our Scouting Units. The Committee is also available to answer questions about the process.

That's what this meeting is about.



What are the basics?

- ❖ Methodist churches are no longer allowed to charter Scouting Units after December 31, 2022, so your current charter expires at the end of December.
- ❖ They may allow units to use church facilities, after the completion of either an “Affiliation Agreement” or a “Facilities Use Agreement”.
- ❖ Your units will need to find a new Chartered Partner within the next few weeks, which will be all but impossible.
- ❖ A small group of long-time scouters have developed a safety net... so don't panic, or even worry.



Answers to questions we know you have...

- ❖ Your unit *will* keep its number.
- ❖ Your unit *may* be able to keep its tenure, we're working on that.
- ❖ Your unit *may* be able to continue meeting at the church.
- ❖ As adult leaders, you will see changes but the kids you serve should see very few.
- ❖ Unit leadership doesn't have to change. In fact, it shouldn't. Scouts will take comfort in seeing familiar faces



Things you may not know, but **need** to...

- ❖ The local church did not do this, it was imposed on them by the General Conference of United Methodist Church
- ❖ Your unit doesn't own its equipment, the church does, so you need to approach your chartering church's pastor or your COR about a meeting with the pastor, Administrative Council Chair, COR and maybe the Methodist Men president and secure their agreement to turn the stuff over to the new chartered partner.
- ❖ Open a new bank account (you will need to find a new partner first as you will need their EIN number)



Potential New Chartered Partner

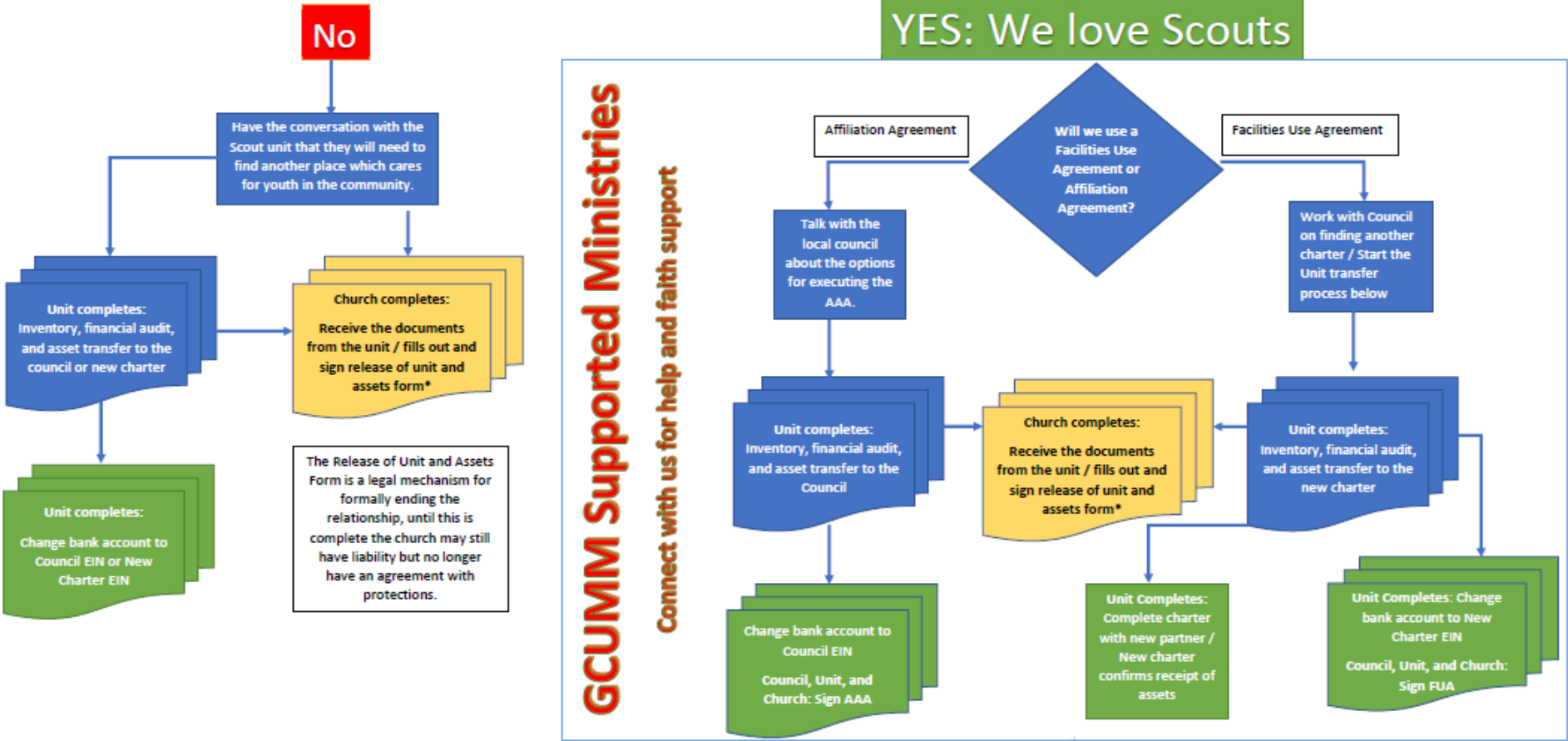
1. A different church
2. A civic organization (Lions, Rotary, VFW, etc.)
3. A private business
4. A group of concerned citizens (this could be a group of people who happen to be members of a church Methodist Men's Group, but not the Men's Group, itself.
5. The safety net... Central Appalachian Scouters Association (we'll call it CASA for short)



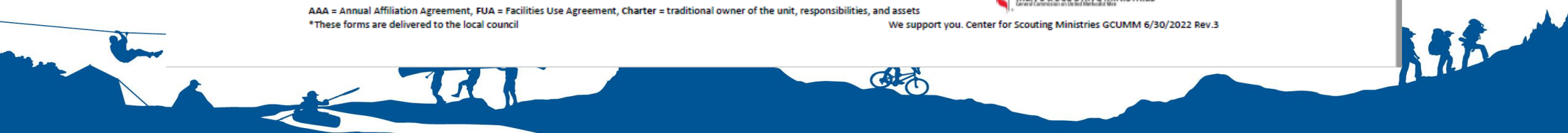
Move Forward Decision Tree for UMC Churches and Units

THE BIG QUESTION: Do you want to continue to live in ministry to youth through Scouting?

If you have questions about this process or the reasons for any direction, we are here to help. www.MethodistScouter.org/a-new-agreement/ or SScheid@GCUMM.org



AAA = Annual Affiliation Agreement, FUA = Facilities Use Agreement, Charter = traditional owner of the unit, responsibilities, and assets
*These forms are delivered to the local council



Information You Have Received

1. By mail – Instructions to United Methodist Church Units
2. In your re-charter packet *
 - A. Instructions to United Methodist Church Units
 - B. Release of Scout Unit Ownership
 - C. Facilities Use & Indemnity Agreement
 - D. A New Unit Application for CASA *
 - E. A Blank New Unit Application – you will need one or the other *
 - F. Annual Charter Agreement – to be completed with your new Charter Org *

